

www.myschlick.com

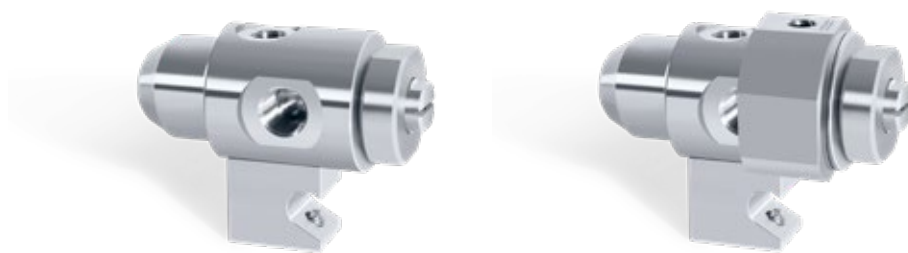


SCHLICK 糖衣包衣喷嘴

Sugar-coating with SCHLICK Nozzle Systems

SCHLICK技术造就完美雾化

SCHLICK technology for a perfect coat



SCHLICK 650 7-1 S40系列是压力式糖衣包衣喷嘴,雾化形状为扇形,通过更换尾部喷芯,可调整雾化流量和雾化角度,即使液体有压力的情况下,喷芯也能直接更换,此系列喷嘴也可加装加热护套,喷嘴在加热护套中的位置可转动调整。

The 650/7-1 S40 series was developed as a pressure-nozzle solution. This fan nozzle features easily interchangeable nozzle end pieces that are available for a wide range of throughput rates and spray angles, and can even be changed when using pressurised liquid. The model is also available with an optional heating jacket, which can be freely rotated around the nozzle.

糖衣包衣喷嘴广泛应用于食品和制药行业

糖衣包衣是一个术语,是指在滚筒内,将糖液均匀喷涂在糖果、巧克力、或者圆形物品的表面(比如坚果等)的一种工艺。

糖衣包衣作业可选择压力式扁喷嘴,也可选择两流体喷嘴,SCHLICK糖衣包衣喷嘴标配了液体回收接口和气动针阀开关。

视具体配方和成分的不同,巧克力包衣作业通常需要特殊的解决方案,很多情况下,压力式喷嘴可能不适用,一般选择两流体喷嘴。

SUGAR-COATING NOZZLES FOR FOOD AND PHARMACEUTICAL INDUSTRIES

Sugar coating is the term used to describe the even application of layers of a sugar solution, or even chocolate, to a round item placed inside a drum (e.g. nuts).

Schlick recommends using either flat spray nozzles or two-substance nozzles for sugar-coating processes. Schlick's specially-designed sugar-coating models feature a liquid return system and a pneumatic on/off control as standard.

A special, modified solution is often required for chocolate spraying applications. Depending on the recipe/composition, in a number of cases a pressure nozzle may not be suitable.



专门用于巧克力包衣的喷嘴设计

948系列两流体喷嘴,是专门为巧克力包衣设计的,可根据客户不同需求,加装加热护套或者铰刀,即使难处理的包衣液,也能实现较好的雾化效果。

对于比较大的生产设备(如带式包衣机),SCHLICK开发了各种各样的专业包衣喷杆,948系列喷嘴均适用于此类喷杆,另外,喷芯也可快速切换成650系列的扁喷芯(手工更换即可,无需工具)。



SPECIAL DESIGNS FOR CHOCOLATE-COATING APPLICATIONS

There are different versions of the specially-created 948 two-substance chocolate nozzle available, which means it can be very easily adapted to the required application. The different versions featuring e.g. heating ducts or a broach ensure reliable spray technology even on challenging media.

For larger production machinery (e.g. belt coaters), Schlick has developed a multi-nozzle spray arm (chocolate manifold) which incorporates several nozzles from the 948 series. These two-substance nozzles can also be replaced with flat spray nozzles (quickly and without the need for tools) so that standard mouth pieces from the 650 series can be used.

ABC 专利防结须糖衣包衣技术

Sugar-coating with ABC Technology®



SCHLICK防结须风帽设计已获专利,受法律保护。

The design of the Schlick Anti-Bearding Cap is patented and therefore legally protected.



应用ABC专利技术的两流体喷嘴

应用SCHLICK专利ABC技术的两流体喷嘴也适用于糖衣包衣作业, SCHLICK专利ABC防结须技术已广泛应用于各种高端包衣设备。

由于雾化液滴极为细小,使得970 7-1 S75和930 7-1 S35喷嘴能够在非常小的颗粒上包衣作业,这两款喷嘴通过更换扁喷芯,也可快速简便地转换为压力式喷嘴。

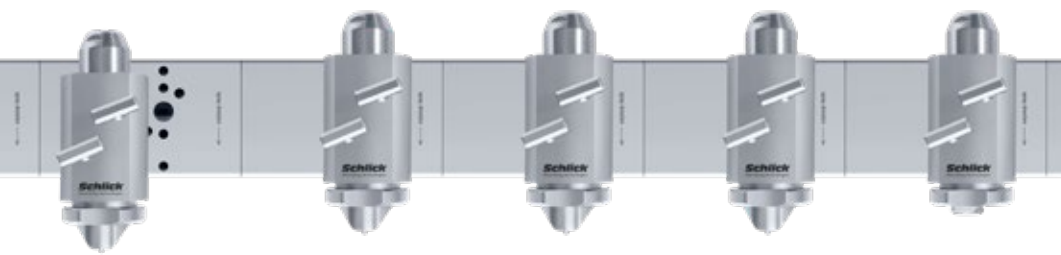
S75和S35这两款喷嘴的雾化气和成型气都是单独控制,因此雾化液滴的大小和雾化角度的调整范围更广,调节方法更简单,雾化一致性好。

TWO-SUBSTANCE NOZZLES WITH ABC TECHNOLOGY®

Two-substance nozzles from Schlick's patented ABC range of are also suitable for use in sugar-coating applications. Patented Anti-Bearding technology has transformed Schlick's ABC series into a range of state-of-the-art coating devices.

An extremely fine spray enables the 970/7-1 S75 and 930/7-1 S35 models to coat even the smallest of particles with sugar, e.g. globules. However, both of these two-substance nozzles can also be quickly and easily turned into pressure nozzles through the addition of a flat spray mouth piece.

Both models are designed with separate attachments for the pattern air (PA) and the atomising air (AA). So, there is more freedom for adjustment. Using the air pressure there are equally as simple and reproducible settings for the droplet size and the spray angle.



应用专利ABC技术的专业包衣枪架 (PCA)

只需更换合适的扁喷嘴,此专业包衣枪架即可用于糖衣包衣生产,极大地提升了生产线柔性,拆装无须特别的工具,手工就能操作。

安装和清洁十分简便,无气管、无接头,停机时间大幅减少,拆装无须特别的工具,手工就能操作。

此枪架可安装2-8个喷嘴,优点明显:每个模块尺寸固定,喷嘴间距精确,避免了安装错误导致间距不对的问题。

PROFESSIONAL COATING ARM (PCA) WITH ANTI-BEARDING TECHNOLOGY

By simply replacing the film-coating nozzle with a suitable flat spray nozzle, the Professional Coating Arm can quickly be modified for sugar-coating applications, offering huge benefits in terms of production. No special tools are required for the arm's installation or de-installation.

Easy installation and cleaning. No hose attachments! No fittings! This leads to much shorter time taken up in servicing. No special tools are required for installation or de-installation.

The construction system allows the variable use of two to eight nozzles. Advantage: Through clearly defined dimensions of the blocks, errors in separation distance between the nozzles arising through installation are eliminated.



930 7-1 S35和970 7-1 S75喷嘴通过更换扁喷芯,很容易转换为压力式喷嘴,650系列喷嘴的标准扁喷芯适用。

此包衣机枪架可用于糖衣包衣作业。

Models 930/7-1 S35 respectively 970/7-1 S75 can be converted into a pressure nozzle with a flat-spray tip with very little effort. The standard flat-spray tips from the 650 model range are used for this purpose.

So the Professional Coating Arm can be used for coating items with sugar solutions.



Living for Solutions.

Düsen-Schlick GmbH
Hutstraße 4
D-96253 Untersiemau/Coburg
Germany
Tel.: +49 9565 9481-0
Fax: +49 9565 2870

www.myschlick.com
info@myschlick.com